

W. S. B.

AGENDA COVER MEMO

MEMORANDUM DATE: September 16, 2009

AGENDA DATE: September 30, 2009

=====

TO: Board of County Commissioners

DEPARTMENT: Lane County Sheriff's Office

PRESENTED BY: Faye Stewart, Chair, Public Safety Coordinating Council

AGENDA TITLE: ORDER _____ /IN THE MATTER OF APPROVING THE 2009-2011 LANE COUNTY COMMUNITY CORRECTIONS PLAN.

I. MOTION

Move to approve the 2009-2011 Lane County Community Corrections Plan.

II. AGENDA ITEM SUMMARY

The Board is being asked to approve the 2009-2011 Lane County Community Corrections Plan.

III. BACKGROUND/IMPLICATIONS OF ACTION

A. Board Action and Other History

In 1995, Oregon voters passed a law imposing minimum penalties for certain violent offenders. This action created a significant increase in the demands placed on state secure facilities and led to legislative action to develop community corrections as a shared responsibility of the State of Oregon and its county governments.

The Oregon Department of Corrections (DOC) makes grants to assist counties in the implementation and operation of community corrections. Consequent to the Community Corrections Act (CCA), Lane County has entered into biennial intergovernmental agreements (IGA) with the DOC to provide community corrections since August 1995 (board order 95-8-23-2).

To receive this funding, Lane County must submit a Community Corrections Plan (CCP) consisting of program descriptions and a budget summary. The CCP must provide supervision, sanctions, and supportive services for the adult offender population on supervised probation, parole, post-prison supervision, and local control.

The County must also provide other services as required by the courts or the Oregon Department of Corrections (DOC), such as pre-sentence investigations, Interstate Compact transfers, etc. The CCP should facilitate the County's compliance with the performance outcomes in the intergovernmental agreement with the DOC. It must also assist the state in meeting state legislative requirements related to evidence based practices as well as meeting local priorities and needs. The current CCP was accepted by the board in June of 2007 (Board order 07-6-27-17).

Formation of the CCP originates in the Supervisory Authority Team; is reviewed by the Adult Community Safety Committee; and, forwarded to the Public Safety Coordinating Council (PSCC) for review and recommendation to the Board of County Commissioners. The PSCC is an advisory body mandated by Oregon Revised Statute (ORS) 423.560.

On March 12, 2008 the Board of County Commissioners adopted an order restructuring the Supervisory Authority Team (SAT) (Board Order 08-3-12-8). The SAT is now comprised of Sheriff Russel Burger, the Presiding Judge Mary Ann Bearden, and County Commissioner Faye Stewart.

The roles and responsibilities of the SAT include:

- Jointly manage the corrections population by developing and using compatible policies and procedures;
- Review and approve changes in policies or practices associated with duties assigned to the supervisory authority under Oregon Revised Statutes;
- Make recommendations that will ensure the efficient and appropriate flow of offenders through the system;
- Monitor existing practices and strategies for managing the offender population and, if appropriate, implement new policies and strategies based on best or promising practices, and
- Provide regular report to the Board of County Commissioners and the Public Safety Coordinating Council describing the management of the offender population.

A task that falls under these roles/responsibilities is review and revision of the County's biennial CCP and its budget. The CCP was presented to the Adult Safety Committee (ASC) and was accepted and approved by the ASC on September 9, 2009.

On September 17, the 2009-2011 Community Corrections Plan will be reviewed and voted on by the full PSCC. Once approved, the Plan will be brought to the Board of County Commissioners for adoption.

CCA funding for the 2009-2011 biennium in the amount of \$21,345,852, (a working estimate suggested by the Department of Corrections), was appropriated in Order 09-6-24-2, on June 24, 2009.

B. Policy Issues

Per Oregon Revised Statutes 423.475 to 423.565, Lane County shares responsibility with the Oregon State Department of Corrections for community-based supervision. Included in these statutes is a mandate regarding the Public Safety Coordinating Council (PSCC). The PSCC is an advisory council mandated to develop and recommend to the Board of Commissioners a comprehensive plan which provides for coordination of community-wide services involving treatment, employment and intervention strategies aimed at crime prevention.

C. Board Goals

Approval of the 2009-2011 Lane County Community Corrections Plan is consistent with the third priority of the Lane County Strategic Plan: Performance Management. Strategies regarding Performance Management include refining countywide goals. The strategic Plan states, "The County will continually review its mission, vision and guiding principles for future service delivery. Consistent with the review and with input from its citizens, the County will identify quality-of-life goals that it deems to be the highest priority goals for Lane County services."

D. Financial and/or Resource Considerations

Services proposed in the 2009-2011 Community Corrections Plan are supported with revenue received through an intergovernmental agreement with the Oregon Department of Corrections anticipated to be \$21,500,138. This compares to a total of \$20,740,814 received in 2007-2009 *after* \$658,032 in cuts ordered in the final quarter of the biennium. (The Board voted to "backfill" these cuts to avoid severe service interruptions). Therefore, the County expects to receive a \$759,324 increase over last biennium's actual DOC funding, but only \$101,292 more than the original 2007-09 biennium budget prior to the November 2008 budget cuts. This increase is largely due to the negotiations that occurred in the legislature to delay full implementation of Measure 57. In fact, \$904,365 of the \$21,500,138 is specifically earmarked as "Measure 57" funding. Without the work of the legislature, these funds would not have been included in the 2009-2011 budget cycle and service cuts would have been required.

A second impact of the lengthy budget negotiations is the extreme delay in finalizing CCA funding and reporting requirements. Because of this, the normal time line for submitting the CCA Plan was changed from July 1, 2009 to October 1, 2009. Lane County did not receive final funding amounts and application instructions until late August and even today, reporting requirements for Measure 57 funds remain unspecified.

E. Analysis

The 2009-2011 Lane County Community Corrections Plan is constructed to continue most program services in place during the second year of the 2009-2011 biennium.

One program, the Bridge treatment program is slated for elimination. This program was put in place to serve residents of the Forest Work Camp. Since the camp was eliminated, the program has struggled to attract sufficient participants. The SAT recommended eliminating the program and adding slots to the Endeavor treatment program which has a wait-list of participants. Another change is to earmark \$10,000 for administrative duties associated with monitoring and reporting requirements of the Plan. Other than these two changes, the plan sustains the Community Corrections System that was in place last biennium.

There are four goals stipulated in the intergovernmental agreement that provides funding to support the plan. These include: reducing criminal behavior as measured by recidivism; enforcing supervisory authority orders; assisting offenders to change as measured by employment rates and participation in treatment programs; and, providing reparation to victims. The plan instructions document received from the state reads the "plan should be designed to accomplish the performance outcomes in the Intergovernmental Agreement, meet mandates of evidence based practices and meet local priorities and needs." However, outcome measures stipulated in the IGA have yet to be tracked over time. One barrier is that there currently exists no system in place to reliably collect the data on the rate of recidivism.

During the planning process for the 2003-05 biennium the Supervisory Authority Team adopted a set of guiding principles to be used in development of the CCP. These were:

1. Move towards a fully-integrated community corrections system, maximizing the effective use of available resources to achieve our community public safety goals and objectives.
2. Develop an integrated risk and needs assessment model in which assessment starts at system entry. Assessments would be updated to help develop programming choices for the individual offender and to maintain the balance of sanctions and services in Lane County.
3. Identify system needs and implement "best practices" to address those identified needs, focusing resources on reducing likelihood to re-offend.
4. Budget development should:
 - a. Reflect these principles;
 - b. Recognize the opportunity presented by downsizing to realize these principles;
 - c. Look to the long-term goals of a system driven by risk and offender needs, accountability and capacity, consistent with the available resources for public safety, even though in the short-term some programs may be impacted more greatly than others; and
 - d. Reflect the original intent of the Community Corrections Act and the

vision of the community.

The CCP is due to the state and must be received and the IGA executed before October 1, 2009 to secure funding for services proposed. The Adult Committee approved the proposed plan on September 9, 2009 and forwarded the Plan to the PSCC with a recommendation to approve. The PSCC will meet on September 17th to review and consider approval of the plan. The resulting plan will be brought to the Board of County Commissioners for approval on September 30, 2009.

IV. Alternatives/Options

1. To accept the motion and approve the 2009-2011 Lane County Community Corrections Plan.
2. Not to accept the motion. This will delay submission of the 2009-2011 Lane County Community Corrections Plan and will delay Community Corrections Act payments for the 2009-2011 biennium.

V. Timing/Implementation

The Community Corrections Plan is due to the State of Oregon, Department of Corrections by October 1, 2009. It governs services that began July 1, 2009. The DOC forwarded funding for the first quarter but will delay further quarterly payments unless the CCA Plan is received by October 1, 2009. Therefore, the CCP must be finalized as soon as possible.

VI. RECOMMENDATION

The Public Safety Coordinating Council recommends that the Board of County Commissioners approve the 2009-2011 Lane County Community Corrections Plan.

VII. FOLLOW-UP

Upon action by the Board, the 2009-2011 Lane County Community Corrections Plan will be submitted to the State of Oregon.

VIII. ATTACHMENTS

1. Board Order
2. *DRAFT* 2009-2011 Community Correction Plan. The final version approved by the PSCC on September 17, 2009 will become the final CCP and will replace the attached *DRAFT* document prior to the September 30, 2009 BCC meeting.

THE BOARD OF COUNTY COMMISSIONERS, LANE COUNTY, OREGON

ORDER:) **IN THE MATTER OF APPROVING THE 2009-2011 LANE**
) **COUNTY COMMUNITY CORRECTIONS PLAN**
)

WHEREAS, pursuant to ORS 423.520 and ORS 423.478 Lane County will, for the 2009-2011 biennium, be allocated \$21,500,138 in grant funds to provide supervision, sanctions and services for adult offenders; and

WHEREAS, Lane County must now describe how funds will be allocated and services delivered; and

WHEREAS, Lane Manual Chapter 21 sets forth policy regarding award of contracts for services and policy regarding signatory authority of the County Administrator; and

WHEREAS, appropriation of funds to support the services has been done through the budget adoption order 09-06-24-2; and,

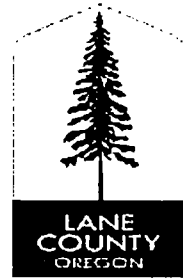
WHEREAS, the 2009-2011 Lane County Community Corrections Plan has been reviewed by several planning bodies including the Public Safety Coordinating Council; and

WHEREAS, the Public Safety Coordinating Council hereby recommends adoption of this plan to the Board of County Commissioners;

NOW THEREFORE, IT IS HEREBY ORDERED, that the Board of County Commissioners accept and approve the 2009-2011 Lane County Community Corrections Plan in the amount of \$21,500,138.

DATED this 30th day of September, 2009.

Pete Sorenson, Chair
Lane County Board of County Commissioners



Lane County

Community Corrections

2009-2011 Biennium Plan

Prepared for:

**Lane County Board of Commissioners
Lane County Public Safety Coordinating Council
Oregon Department of Corrections**

Prepared by the Supervisory Authority Team:

**Sheriff Russel E. Burger
Judge Debra Vogt
Commissioner Faye Stewart**

Board of Commissioners

**Faye Hills Stewart, East Lane
Rob Handy, North Eugene
Pete Sorenson, South Eugene
Bill Dwyer, Springfield
Bill Fleenor, West Lane**

County Administrator

Jeff Spartz

LANE COUNTY COMMUNITY CORRECTIONS

2009-2011 PLAN

TABLE OF CONTENTS

<i>Community Corrections Plan Cover Sheet</i>	1
<i>Public Safety Coordinating Council Letter of Transmittal</i>	2
<i>Lane County Board of County Commissioners Order</i>	3
<i>Community Corrections Budget Summary</i>	4
<i>Organizational Chart</i>	5
PROGRAM DESCRIPTIONS	6
Administration	7
Community-Based Custodial Alternatives	8
Electronic Surveillance	8
Community Service & Work Crew	9
Custodial/Sanction Beds	10
Jail	10
Community Correction Center	11
Day Reporting Centers	12
Mental Health Services	13
Mental Health Services for Supervised Offenders	13
Sanctions	14
Sex Offender Services	15
Supervised Housing for Male Sex Offenders	15
Sex Offender Treatment Services	16
Substance Abuse Treatment Services	17
Drug Court	17
Bridge Program	18
Outpatient Alcohol and Drug Abuse Treatment	19
Supervision	20
Community Supervision	21
Defendant/Offender Management/Pretrial	22
Transition Services	23-24
Transitional Housing	
Crisis Funds and Administration	
Release Subsidy	25
Other Services	26
Alcohol/Drug Detoxification	

LANE COUNTY COMMUNITY CORRECTIONS 2009-2001 COMMUNITY CORRECTIONS PLAN COVER SHEET

Department of Corrections 2575 Center St. NE Salem, OR 97310	<i>For Office Use Only</i> Date Received: Time Received:																		
County: Lane	Date: September 30, 2009																		
Address: Lane County, Sheriff's Office 125 East Eighth, Eugene, OR 97401 Telephone: (541) 682-4035 Fax: (541) 682-3804																			
Community Corrections Manager: Joan Copperwheat Address: Lane County, Parole & Probation 165 East 7 th Avenue, Eugene, OR 97401 Telephone: (541) 682-3058 Fax: (541) 682-3058 E-mail: Joan.Copperwheat@co.lane.or.us																			
Sheriff: Russel E. Burger Address: Lane County Sheriff's Office PSB, 125 East Eighth, Room 140, Eugene, OR 97401 Telephone: (541) 682-3980 Fax: (541) 682-4522 E-mail: russel.burger@co.lane.or.us																			
Jail Manager: Captain Doug Hooley Address: Lane County Sheriff's Office 101 West Fifth Avenue, Eugene, OR 97401 Telephone: (541) 682-2245 Fax: (541) 682-2128 E-mail: Doug.Hooley@co.lane.or.us																			
1. Supervisory Authority: Sheriff Russel E. Burger Address: Lane County Sheriff's Office 125 East Eighth, Room 140, Eugene, OR 97401 Telephone: (541) 682-3980 Fax: (541) 682-4522 E-mail: russel.burger@co.lane.or.us 2. Supervisory Authority: Judge Debra Vogt Address: Oregon Judicial Department Courthouse, 125 East Eighth, Eugene, OR 97401 Telephone: 541-682-4027	3. Supervisory Authority: Faye Stewart Address: Lane County Commissioner PSB, 125 East Eighth, Eugene, OR 97401 Telephone: (541) 682-4203 Fax: (541) 682-4616 E-mail: Faye.Stewart@co.lane.or.us LPSCC Contact: Janice Gotchall Telephone: 541-682-3705, Fax: 541-682-2722 Lane County Sheriff's Office 125 E. 8 th Ave Eugene, OR 97401																		
<h3>BUDGET</h3> <table style="width: 100%; border-collapse: collapse;"> <tr> <td style="width: 60%;">State Grant-in-Aid Funds (LAB):</td> <td style="text-align: right;">20,461,080</td> </tr> <tr> <td>Treatment Transition Funds</td> <td style="text-align: right;">\$ 134,693</td> </tr> <tr> <td>Measure 57 Funding</td> <td style="text-align: right;">\$ 904,365</td> </tr> <tr> <td>County General Funds:</td> <td style="text-align: right;">\$ 6,143,211</td> </tr> <tr> <td>Supervision Fees:</td> <td style="text-align: right;">\$ 1,350,000</td> </tr> <tr> <td>Client Fees:</td> <td style="text-align: right;">\$ 1,117,950</td> </tr> <tr> <td>Other Funds:</td> <td style="text-align: right;">\$ 16,578,514</td> </tr> <tr> <td>Inmate Welfare Release Subsidy Funds:</td> <td style="text-align: right;">\$ 55,374</td> </tr> <tr> <td style="text-align: right;">TOTAL BUDGET:</td> <td style="text-align: right;">\$ 46,745,187</td> </tr> </table>		State Grant-in-Aid Funds (LAB):	20,461,080	Treatment Transition Funds	\$ 134,693	Measure 57 Funding	\$ 904,365	County General Funds:	\$ 6,143,211	Supervision Fees:	\$ 1,350,000	Client Fees:	\$ 1,117,950	Other Funds:	\$ 16,578,514	Inmate Welfare Release Subsidy Funds:	\$ 55,374	TOTAL BUDGET:	\$ 46,745,187
State Grant-in-Aid Funds (LAB):	20,461,080																		
Treatment Transition Funds	\$ 134,693																		
Measure 57 Funding	\$ 904,365																		
County General Funds:	\$ 6,143,211																		
Supervision Fees:	\$ 1,350,000																		
Client Fees:	\$ 1,117,950																		
Other Funds:	\$ 16,578,514																		
Inmate Welfare Release Subsidy Funds:	\$ 55,374																		
TOTAL BUDGET:	\$ 46,745,187																		



PSCC OFFICERS

CHAIR, FAYE STEWART
Commissioner (Rural)

VICE CHAIR, TIM LAUE
Lay Citizen

VOTING MEMBERS

PETE KERNS
Chief of Police

RUBS BURGER
Sheriff

ALEX GARDNER
District Attorney

MARYANN BEARDEN
State Court Judge

GREG HAZARABEDIAN
Public Defender

JOAN COPPERHEAT
Community Corrections Manager

LISA SMITH
Youth Services Director

ROB ROCKSTROM
Health & Human Services Director (Mental Health)

KAREN GILLETTE
Public Health Manager

HILLARY WYLIE
Springfield City Councilor

CHUCK SPIES
Lovel City Administrator

JENNIFER SOLOMON
Eugene City Councilor

PAUL SOLOMON
Lay Citizen

NON-VOTING MEMBERS

ROB EDWARDS
OSB Representative

STEVE HARDER
Oregon Youth Authority

JEFF SPARTZ
County Administrator

125 EAST 9th AVENUE
EUGENE, OR 97401
541-682-4203

September 17, 2009

Pete Sorenson, Chair
Lane County Board of Commissioners
125 E. 8th Avenue
Eugene, Oregon 97401

Dear Mr. Sorenson:

ORS 423.65(3)(a) charges local public safety coordinating councils with developing and recommending "to the county board of commissioners a plan for use of state and local resources to serve the local offender population". In compliance with this statute, on September 17, 2009, the Public Safety Coordinating Council reviewed Lane County's Community Corrections Plan for 2009-11 developed by the Supervisory Authority Team (SAT) established by the Lane County Board of Commissioners. The Plan was approved by the PSSC Adult Committee and the full PSSC and is hereby forwarded to the Board of County Commissioners with a recommendation for adoption and submission to the Oregon Department of Corrections for funding.

Sincerely,

A handwritten signature in black ink that reads "Faye Stewart".

Faye Stewart
Chair

DRAFT

THE BOARD OF COUNTY COMMISSIONERS, LANE COUNTY, OREGON

ORDER:) IN THE MATTER OF APPROVING THE 2009-2011 LANE COUNTY
) COMMUNITY CORRECTIONS PLAN
)

WHEREAS, pursuant to ORS 423.520 and ORS 423.478 Lane County will, for the 2009-2011 biennium, be allocated \$21,500,138 in grant funds to provide supervision, sanctions and services for adult offenders; and

WHEREAS, Lane County must now describe how funds will be allocated and services delivered; and

WHEREAS, Lane Manual Chapter 21 sets forth policy regarding award of contracts for services and policy regarding signatory authority of the County Administrator; and

WHEREAS, appropriation of funds to support the services has been done through the budget adoption order 09-06-24-2; and,

WHEREAS, the 2009-2011 Lane County Community Corrections Plan has been reviewed by several planning bodies including the Public Safety Coordinating Council; and

WHEREAS, the Public Safety Coordinating Council hereby recommends adoption of this plan to the Board of County Commissioners;

NOW THEREFORE, IT IS HEREBY ORDERED, that the Board of County Commissioners accept and approve the 2009-2011 Lane County Community Corrections Plan in the amount of \$21,500,138.

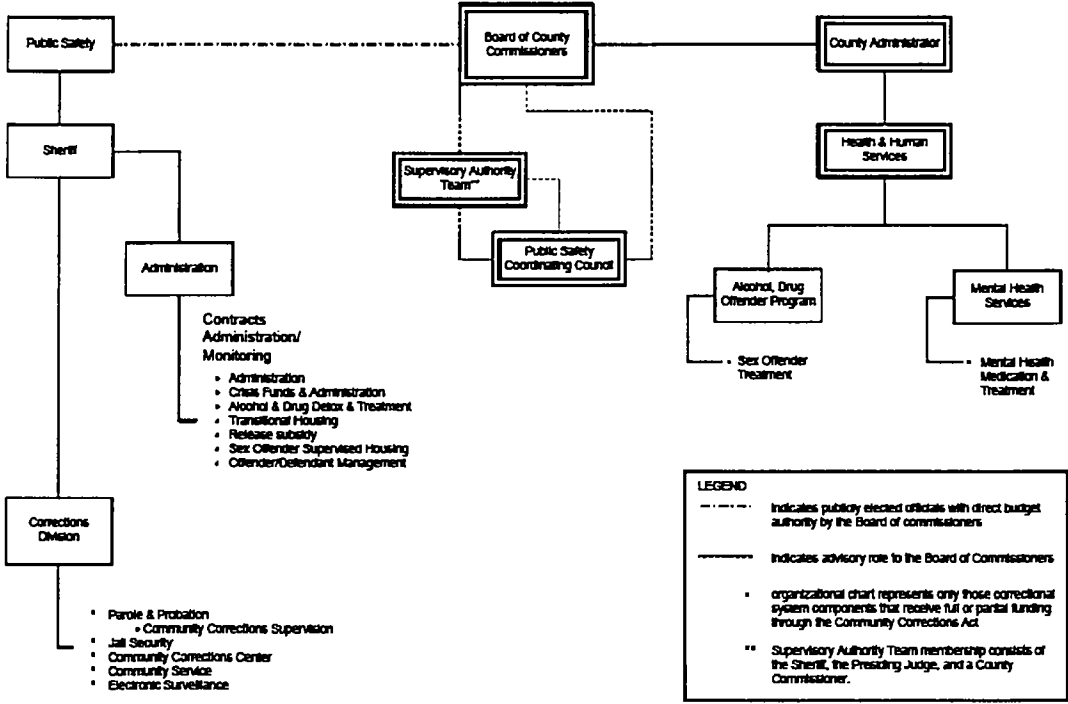
DATED this 30th day of September, 2009.

Pete Sorenson, Chair
Lane County Board of County Commissioners

**Lane County Community Corrections Budget Summary
2009-2011 Biennium
Community Corrections State Grant Funds**

Program Name	State Grant Funds			Total
	*Includes Treatment Transition & M57	Inmate Welfare Release Subsidy Fund	County/Other Funds	
Administration	\$10,000		\$0	\$10,000
Community-Based Custodial Alternatives	\$60,000		\$508,852	\$568,852
Community Service and Work Crew	\$317,916		\$62,000	\$379,916
Custodial/Sanction Beds	\$8,056,767		\$16,335,448	\$24,392,215
Day Reporting Centers	\$0		\$0	\$0
Mental Health Services	\$192,176		\$160,000	\$352,176
Sanctions	\$0		\$0	\$0
Sex Offender Services	\$661,020		\$214,081	\$875,101
Substance Abuse	\$854,912		\$637,782	\$1,492,694
Supervision	\$10,023,628		\$5,977,408	\$16,001,036
Transition Services	\$1,177,719		\$420,058	\$1,597,777
Other Programs	\$0		\$0	\$0
Other Services - Alcohol & Drug Detox	\$146,000		\$874,046	\$1,020,046
Release Subsidy		\$55,374	\$0	\$55,374
Fund Total	\$21,500,138	\$55,374	\$25,189,675	\$46,745,187

Lane County Correctional System*



PROGRAM DESCRIPTIONS

Administration

Program Name: Administration – Lane County Sheriffs Office	
Program Purpose: To reduce criminal behavior, enforce Court, Board of Parole and Post-Prison Supervision, and Local Supervisory Authority Order, assist offenders to change and provide reparation to victims by providing administrative support for the community corrections planning process, and administration of community corrections funding and subcontracts.	
Program Description: Preparation of the Community Correction Plan and submission for approval to the board of county commissioners, processing of the DOC intergovernmental agreement and any amendments, selection, negotiation and development of subcontracts for services, coordination of contracting for program services. Budget and financial services including support with budget development, monitoring and consultation; processing of revenue agreement and amendments; processing of subcontracts; accounts receivable/grant tracking and reconciliation; accounts payable; financial reporting.	
Program Objectives: <p>Accurate and timely - preparation of the Community Correction Plan; review, preparation and processing of the DOC intergovernmental agreement through the county system; selection, negotiation and preparation of service subcontracts.</p> <p>High-quality budget and financial services including timely billing of revenue sources and submission of grantor required reports; timely and accurate payments to service providers; high quality budget support including development, monitoring and consultation.</p>	
Method(s) of Evaluation: <p>Percent of state planning requirements met on time, percent of subcontracts developed within specified time frames, percent of contracts processed error-free. Percent of timely revenue billing, percent of timely submission of grantor required reports; percent of service invoices processed within one week of receipt; percent of budget deadlines met.</p>	
CPC Review Completed? <input checked="" type="checkbox"/> No <input type="checkbox"/> Yes; if yes, _____ Overall Score	
Monthly Average to be served: n/a	Type of offender served: N/A
Funding Sources:	
<input checked="" type="checkbox"/> State Grant-in-Aid	\$10,000
<input type="checkbox"/> County General Fund	\$
<input type="checkbox"/> Other(_____)	\$

Community-Based Custodial Alternatives

Program Name: Electronic Surveillance – Lane County Sheriff’s Office	
Program Purpose: To enforce Court, Board of Parole and Post-Prison Supervision and Local Supervisory Authority Order and to assist offenders to change through creating sanctions as alternatives to incarceration within the community for high-risk offenders and through providing alternatives as a transitional program	
Program Description: The electronic surveillance program is an incarceration alternative that utilizes electronic transmitting and receiving devices to randomly monitor the assigned location of an offender. The system is enhanced by voice verification, which is utilized for select cases and conditions. Person-to-person contacts are also made on a scheduled and random basis.	
Program Objectives: Allows Offenders in this program to continue work or participate in training or educational activities, provide family support, and meet other financial responsibilities (for example, victim restitution, court costs, and other related costs). Number of new program participants, number of successful completion and number of offender accountability checks.	
Method(s) of Evaluation: Monthly staff reports and monthly program reports.	
CPC Review Completed? <input checked="" type="checkbox"/> No <input type="checkbox"/> Yes; if yes, _____ Overall Score	
Monthly Average to be served: 30	Type of offender served: <input checked="" type="checkbox"/> Probation <input checked="" type="checkbox"/> Parole / Post-Prison Supervision <input checked="" type="checkbox"/> Local Control Risk Level <input checked="" type="checkbox"/> High <input checked="" type="checkbox"/> Medium <input checked="" type="checkbox"/> Low <input checked="" type="checkbox"/> Limited Gender <input checked="" type="checkbox"/> Men <input checked="" type="checkbox"/> Women Crime Category <input checked="" type="checkbox"/> Felony <input checked="" type="checkbox"/> Misdemeanor
Funding Sources:	
<input checked="" type="checkbox"/> State Grant-in-Aid	\$ 60,000
<input type="checkbox"/> County General Fund	\$
<input checked="" type="checkbox"/> Other(Program Fees _____)	\$474,852
<input checked="" type="checkbox"/> Other(Miscellaneous Revenue _____)	\$ 34,000 (BOP)
<input type="checkbox"/> Other(_____)	\$ _____

Community Service & Work Crew

Program Name: Community Service – Lane County Sheriff's Office	
Program Purpose: To enforce Court, Board of Parole and Post-Prison Supervision, and Local Supervisory Authority Orders and assist offenders to change by placing offenders with local agencies to perform mandated community service to satisfy a sentence or to serve as a diversion option.	
Program Description: The Community Service Program serves the municipal, justice and circuit courts. Additionally, the district attorney uses this for diversion and probation and parole uses it as a sanction alternative over 440 work sites are approved for offender placement.	
Program Objectives: Successful program completion, successful client placement and percentage of offenders working.	
Method(s) of Evaluation: Offender monthly reporting, agency monthly reporting and program case management.	
CPC Review Completed? <input checked="" type="checkbox"/> No <input type="checkbox"/> Yes; if yes, _____ Overall Score	
Monthly Average to be served:	Type of offender served: <input checked="" type="checkbox"/> Probation <input checked="" type="checkbox"/> Parole / Post-Prison Supervision <input checked="" type="checkbox"/> Local Control Risk Level <input checked="" type="checkbox"/> High <input checked="" type="checkbox"/> Medium <input checked="" type="checkbox"/> Low <input checked="" type="checkbox"/> Limited Gender <input checked="" type="checkbox"/> Men <input checked="" type="checkbox"/> Women Crime Category <input checked="" type="checkbox"/> Felony <input checked="" type="checkbox"/> Misdemeanor
Funding Sources:	
<input checked="" type="checkbox"/> State Grant-in-Aid	\$317,916
<input type="checkbox"/> County General Fund	\$
<input checked="" type="checkbox"/> Other(Program Fees _____)	\$ 62,000
<input type="checkbox"/> Other(_____)	\$ _____

Custodial/Sanction Beds

Program Name: Jail - Secured Housing – Lane County Sheriff's Office	
Program Purpose: To enforce Court, Board of Parole and Post-Prison Supervision, and Local Supervisory Authority Orders through secure jail housing for offenders who are revoked to the custody of the Supervisory Authority, or serving an intermediate sanction, and who are awaiting placement into or are unacceptable for an alternative (non-jail) program.	
Program Description: The Lane County Adult Corrections facility is a secure jail housing a diverse complement of inmates in a variety of housing configurations (dormitories and single cells) and classifications (minimum, medium, and maximum). While incarcerated Local Control Offenders are evaluated for alternative program placement and participate in work, education, and limited treatment programs.	
Program Objectives: To keep designated offenders securely incarcerated while maintaining the safety of the public, the jail staff, and the inmates. To provide rehabilitative opportunities as resources allows.	
Method(s) of Evaluation: Gathering statistics regarding escapes, injuries, disciplinary actions, as well as other relevant data that would indicate that the jail was meeting its objectives.	
CPC Review Completed? <input checked="" type="checkbox"/> No <input type="checkbox"/> Yes; if yes, _____ Overall Score	
Monthly Average to be served:	Type of offender served: <input checked="" type="checkbox"/> Probation <input checked="" type="checkbox"/> Parole / Post-Prison Supervision <input checked="" type="checkbox"/> Local Control Risk Level <input checked="" type="checkbox"/> High <input checked="" type="checkbox"/> Medium <input checked="" type="checkbox"/> Low <input checked="" type="checkbox"/> Limited Gender <input checked="" type="checkbox"/> Men <input checked="" type="checkbox"/> Women Crime Category <input checked="" type="checkbox"/> Felony <input checked="" type="checkbox"/> Misdemeanor
Funding Sources:	
<input checked="" type="checkbox"/> State Grant-in-Aid	\$7,683,105
<input checked="" type="checkbox"/> County General Fund	\$3,343,286
<input checked="" type="checkbox"/> Other(US Marshall_____)	\$9,269,218
<input checked="" type="checkbox"/> Other(BOP_____)	\$ 12,000
<input checked="" type="checkbox"/> Other(INS_____)	\$ 50,000
<input checked="" type="checkbox"/> Other(Eugene Contract_____)	\$1,297,738
<input checked="" type="checkbox"/> Other(Inmate housing_____)	\$ 381,686
<input checked="" type="checkbox"/> Other (Misc Federal)	\$ 25,000

Custodial/Sanction Beds

Program Name: Community Corrections Center – Lane County Sheriff's Office	
Program Purpose: To enforce Court, Board of Parole and Post-Prison Supervision, and Local Supervisory Authority Orders, assist offenders to change and, provide reparation to victims through providing an incarceration alternative for property, traffic, and sex offenders, as well as offenders with substance abuse problems. This program also serves as a short-term facility for inmates who are awaiting placement in the electronic supervision program or on a road crew assignment. Adult probationers and parolees and federal cases may also be served in accordance with necessary authority and agreements	
Program Description: A community, center-based alternative custody program that requires inmates to seek and secure employment or education opportunities as a condition of program participation. Inmates make payments toward restitution, court costs, and program housing costs, and participate in treatment programs at the center and in the community, consistent with their needs.	
Program Objectives: Number of new participants, successful completions, number obtaining employment, program activities and accountability checks.	
Method(s) of Evaluation: Offender programming, monthly program reports and monthly staff reports.	
CPC Review Completed? <input checked="" type="checkbox"/> No <input type="checkbox"/> Yes; if yes, _____ Overall Score	
Monthly Average to be served:	Type of offender served: <input checked="" type="checkbox"/> Probation <input checked="" type="checkbox"/> Parole / Post-Prison Supervision <input checked="" type="checkbox"/> Local Control Risk Level <input checked="" type="checkbox"/> High <input checked="" type="checkbox"/> Medium <input checked="" type="checkbox"/> Low <input checked="" type="checkbox"/> Limited Gender <input checked="" type="checkbox"/> Men <input checked="" type="checkbox"/> Women Crime Category <input checked="" type="checkbox"/> Felony <input checked="" type="checkbox"/> Misdemeanor
Funding Sources:	
<input checked="" type="checkbox"/> State Grant-in-Aid	\$ 373,662
<input type="checkbox"/> County General Fund	\$
<input checked="" type="checkbox"/> Other(Program Rent _____)	\$ 267,000
<input checked="" type="checkbox"/> Other(Miscellaneous Revenue _____)	\$1,679,000 (BOP)
<input type="checkbox"/> Other(Telephone calls & laundry _____)	\$ 10,520

Day Reporting Centers

No services in this category.

Mental Health Services

Program Name: Mental Health Treatment for Supervised Offenders									
Program Purpose: To reduce criminal behavior and assist offenders to change by providing mental health treatment, psychiatric evaluation, and medication monitoring for offenders on supervised probation and post-prison supervision.									
Program Description: Lane County Mental Health Outpatient Clinic will provide a dedicated 1.0 FTE of Mental Health Specialist with these funds to provide diagnostic assessment, case management, consultation, individual and group therapy and psychoeducational supports and skills training to individuals referred by Supervision Services. Crisis plans will be developed and clients would have access to the Clinic's after hours crisis system. With other funding, 0.33 FTE of psychiatric prescribing time will be made available to this population when indicated for the provision of psychiatric assessment and consultation and medication management. Other Mental Health funds support the purchase of medications for these clients, most of whom lack OHP. Linkage to other specialized services will be made as needed.									
Program Objectives: To stabilize offenders' mental health status, to allow them to be more successful in complying with supervision conditions, and to assist in reducing recidivism.									
Method(s) of Evaluation: Services provided will be tracked and recidivism and compliance with supervision will be tracked.									
CPC Review Completed? <input checked="" type="checkbox"/> X No <input type="checkbox"/> Yes; if yes, _____ Overall Score									
Monthly Average to be served: 60	Type of offender served: <input checked="" type="checkbox"/> Probation <input checked="" type="checkbox"/> Parole / Post-Prison Supervision <input checked="" type="checkbox"/> Local Control Risk Level <input checked="" type="checkbox"/> High <input checked="" type="checkbox"/> Medium <input checked="" type="checkbox"/> Low <input checked="" type="checkbox"/> Limited Gender <input checked="" type="checkbox"/> Men <input checked="" type="checkbox"/> Women Crime Category <input checked="" type="checkbox"/> Felony <input checked="" type="checkbox"/> Misdemeanor								
Funding Sources: <table style="width: 100%; border: none;"> <tr> <td style="width: 60%;"><input checked="" type="checkbox"/> State Grant-in-Aid</td> <td style="text-align: right;">\$192,176</td> </tr> <tr> <td><input type="checkbox"/> County General Fund</td> <td style="text-align: right;">\$</td> </tr> <tr> <td><input checked="" type="checkbox"/> Other(OHP, as applicable_____)</td> <td style="text-align: right;">\$ 10,000</td> </tr> <tr> <td><input type="checkbox"/> Other(State SE20 Adult Outpatient_____)</td> <td style="text-align: right;">\$ 150,000</td> </tr> </table>		<input checked="" type="checkbox"/> State Grant-in-Aid	\$192,176	<input type="checkbox"/> County General Fund	\$	<input checked="" type="checkbox"/> Other(OHP, as applicable_____)	\$ 10,000	<input type="checkbox"/> Other(State SE20 Adult Outpatient_____)	\$ 150,000
<input checked="" type="checkbox"/> State Grant-in-Aid	\$192,176								
<input type="checkbox"/> County General Fund	\$								
<input checked="" type="checkbox"/> Other(OHP, as applicable_____)	\$ 10,000								
<input type="checkbox"/> Other(State SE20 Adult Outpatient_____)	\$ 150,000								

Sanctions

No services provided in this category.

Sex Offender Services

Program Name: Sex Offender Treatment Services	
Program Purpose: To reduce criminal behavior, enforce Court, Board of Parole and Post-Prison Supervision, and Local Supervisory Authority Orders, assist offenders to change and, enhance community safety through the evaluation and treatment of sex offenders.	
Program Description: Provide comprehensive sex offender evaluations; a psychoeducational treatment group for clients entering treatment; intensive treatment services, including group, individual and family sessions; on-site polygraphs; on-site psychiatric evaluation and medication management; and case coordination with P&P and other agencies as appropriate.	
Program Objectives: To provide sex offender treatment to offenders referred by parole and probation officers. To reduce offender recidivism and decrease sexually deviant behavior.	
Method(s) of Evaluation: Client re-conviction rates; other evidence of repeat sex offenses, e.g., failed polygraphs or offender self-report.	
CPC Review Completed? _____ No ___x___ Yes; if yes, 63 _____ Overall Score	
Monthly Average to be served: 32	Type of offender served: <input checked="" type="checkbox"/> Probation <input checked="" type="checkbox"/> Parole / Post-Prison Supervision <input checked="" type="checkbox"/> Local Control Risk Level <input checked="" type="checkbox"/> High <input checked="" type="checkbox"/> Medium <input checked="" type="checkbox"/> Low <input type="checkbox"/> Limited Gender <input checked="" type="checkbox"/> Men Crime Category <input checked="" type="checkbox"/> Felony <input checked="" type="checkbox"/> Misdemeanor
Funding Sources:	
<input checked="" type="checkbox"/> State Grant-in-Aid	\$ 584,370
<input type="checkbox"/> County General Fund	\$
<input checked="" type="checkbox"/> Other(Offender Fees_____)	\$ 75,000
<input checked="" type="checkbox"/> Other(Testing Fees_____)	\$ 4,800
<input checked="" type="checkbox"/> Other(Fund balance carryover_____)	\$ 33,481

Sex Offender Services

Program Name: Supervised Housing for Male Sex Offenders – Sponsors, Inc.	
Program Purpose: To reduce criminal behavior, enforce Court, Board of Parole and Post-Prison Supervision, and Local Supervisory Authority Orders and, assist offenders to change through providing housing and supervision for male sex offenders who are on parole or transitioning from Oregon State correctional facilities or Lane County Adult Corrections to the community.	
Program Description: Provide supervised housing for medium and high risk, male sex offenders. Monitor compliance with supervision requirements and stipulations. Work with Community Corrections to initiate and maintain offender program activities in Sponsor's facilities.	
Program Objectives: <ol style="list-style-type: none"> 1. Enhance public safety by closer monitoring of high-risk sex offenders; 2. Reduce recidivism among participants; 3. Reduce the number of technical violations among participants; 4. Increase or maintain the employment rates of participants; 5. Increase the percentage of positive probation, parole and post-prison supervision case closures among participants. 	
Method(s) of Evaluation: On exit from program, document each client's success in maintaining employment and compliance with release requirements and stipulations.	
CPC Review Completed? <input checked="" type="checkbox"/> X No <input type="checkbox"/> Yes; if yes, _____ Overall Score _____	
Monthly Average to be served: 14	Type of offender served: <input checked="" type="checkbox"/> Probation <input checked="" type="checkbox"/> Parole / Post-Prison Supervision <input checked="" type="checkbox"/> Local Control Risk Level <input checked="" type="checkbox"/> High <input checked="" type="checkbox"/> Medium <input type="checkbox"/> Low <input type="checkbox"/> Limited Gender <input checked="" type="checkbox"/> Men <input type="checkbox"/> Women Crime Category <input checked="" type="checkbox"/> Felony <input type="checkbox"/> Misdemeanor
Funding Sources:	
<input checked="" type="checkbox"/> State Grant-in-Aid	\$ 76,650
<input type="checkbox"/> County General Fund	\$
<input checked="" type="checkbox"/> Other (Client Fees _____)	\$ 100,800
<input type="checkbox"/> Other (_____)	\$

Substance Abuse Treatment Services

Program Name: Alcohol & Drug Treatment, Drug Court -Emergence	
Program Purpose: To reduce criminal behavior, enforce Court, Board of Parole and Post-Prison Supervision, and Local Supervisory Authority Orders and, assist offenders to change by diverting offenders to the drug court program.	
Program Description: Treatment component of a pre-adjudication, stipulated facts felony diversion program. Eligible defendants charged with felony drug possession are given the opportunity to enter by filing a petition with the Court, admitting the facts of the pending charge(s) and agreeing to complete treatment under supervision of the Drug Court. Also eligible are participants entering as a condition of their probation. Successful completion results in dismissal of the felony charges for some participants. Cognitive/behavioral skills therapy is utilized along with outpatient alcohol & other drug treatment and ongoing monitoring for continued use.	
Program Objectives: Reduced offender recidivism; demonstrated abstinence prior to successful discharge; timely and accurate reporting of client status to court and close partnership with them to provide effective case management; full time employment for all participants; increase Drug Court graduation and retention rates.	
Method(s) of Evaluation: Client re-arrest records, in-treatment status reporting, slot utilization measurements and reporting, negative urinalysis rates, client retention and engagement rates and feedback from Court.	
CPC Review Completed? <input checked="" type="checkbox"/> No <input type="checkbox"/> Yes; if yes, _____ Overall Score	
Monthly Average to be served: 115	Type of offender served: <input checked="" type="checkbox"/> Probation <input checked="" type="checkbox"/> Parole / Post-Prison Supervision <input type="checkbox"/> Local Control Risk Level <input checked="" type="checkbox"/> High <input type="checkbox"/> Medium <input type="checkbox"/> Low <input type="checkbox"/> Limited Gender <input checked="" type="checkbox"/> Men <input checked="" type="checkbox"/> Women Crime Category <input checked="" type="checkbox"/> Felony <input type="checkbox"/> Misdemeanor
Funding Sources:	
<input checked="" type="checkbox"/> State Grant-in-Aid	\$ 180,000
<input type="checkbox"/> County General Fund	\$
<input checked="" type="checkbox"/> Other(Third party reimbursement _____)	paid to tx provider, not program
<input checked="" type="checkbox"/> Other(Serbu _____)	\$ 85,058
<input checked="" type="checkbox"/> Other(Court Fees _____)	\$ 2,978
<input checked="" type="checkbox"/> Other(Oregon CJC Grant projected _____)	\$ 286,154
<input checked="" type="checkbox"/> Other(OR DHS AMHD IGA (Lane County) _____)	\$ 188,592

Substance Abuse Treatment Services

Program Name: <i>Alcohol & Drug Treatment, Endeavor – Emergence</i>	
Program Purpose: To reduce criminal behavior, enforce Court, Board of Parole and Post-Prison Supervision, and Local Supervisory Authority Orders and, assist offenders to change by assisting supervised offenders with alcohol/drug problems to enter and/or maintain an alcohol and drug-free lifestyle.	
Program Description: An evidence-based outpatient chemical dependency treatment program offering comprehensive treatment services for adult offenders. Program services and interventions target dynamic criminal risk factors that can be changed through intervention with more intensive services provided to higher need offenders. It serves adult male and female corrections clients, consistently using various treatment curricula that are all regarded in the literature as evidence-based best practices, including the Matrix Model, Moral Reconciliation Therapy (MRT), and Thinking For a Change. The program targets criminogenic needs in the following domains: chemical dependency, criminal thinking, treatment readiness, attitudes, and relapse prevention. The program meets the CPC criteria, as treatment lasts 4 to 6 months for the majority of offenders and consistently uses cognitive curriculum, using evidence-based approaches with a heavy emphasis on skill-building and practice. Treatment services are augmented with check-in reporting & monitoring as well as case management services for waitlisted referrals. Referral volume has greatly exceeded treatment capacity since program inception. The Endeavor Program received a CPC Review rating of 84 in April 2009, besting statewide and national average scores.	
Program Objectives: Reduced offender recidivism; increased pro-social behavior of offenders; increased compliance with supervision orders; reduced or eliminated drug and alcohol use by offenders.	
Method(s) of Evaluation: Some or all of the following measures; client re-arrest records, in-treatment status reporting, slot utilization measurements and reporting, negative urinalysis rates, client engagement and retention in treatment rates, reduced drug-use rates, treatment completion rates.	
CPC Review Completed? _____ No <input checked="" type="checkbox"/> Yes; if yes, <u>84</u> Overall Score	
Monthly Average to be served: 75	Type of offender served: <input checked="" type="checkbox"/> Probation <input checked="" type="checkbox"/> Parole / Post-Prison Supervision <input checked="" type="checkbox"/> Local Control Risk Level <input checked="" type="checkbox"/> High <input checked="" type="checkbox"/> Medium <input checked="" type="checkbox"/> Low <input type="checkbox"/> Limited Gender <input checked="" type="checkbox"/> Men <input checked="" type="checkbox"/> Women Crime Category <input checked="" type="checkbox"/> Felony <input type="checkbox"/> Misdemeanor
Funding Sources:	
<input checked="" type="checkbox"/> State Grant-in-Aid	\$ 651,912
<input type="checkbox"/> County General Fund	\$
<input checked="" type="checkbox"/> Other(<u>Third Party Reimbursement</u>)	\$ 75,000

Supervision

Program Name: *Community Supervision – Lane County Parole & Probation*

Program Purpose: To reduce criminal behavior, enforce Court, Board of Parole and Post-Prison Supervision, and Local Supervisory Authority Orders, assist offenders to change and, provide reparation to victims

Program Description:

This program provides community supervision and sanctions for approximately 3,500 offenders on supervised probation or post-prison supervision, including misdemeanor and felony domestic violence offenders and sex offenders. It also includes investigative services, including transfer requests between counties, interstate transfer requests, and pre-sentence investigations as ordered by Circuit Court. Specialized services are as follows:

Neighborhood-Based Supervision Program: Several Probation/Parole Officers are “outstationed” in metro and rural agencies, including Eugene Police Department (EPD) substations, Junction City Police Station, Florence Justice Center, and the Housing Authority. These officers are assigned a caseload from their particular area, and they work closely with other agencies in that community, including law enforcement and social service agencies.

Sex Offender Supervision: Sex offenders receive specialized supervision from officers who have received additional training in this area. A specialized risk assessment tool is used for this population. Community notification occurs for selected cases. Polygraphs and specialized treatment programs are also utilized.

Domestic Violence Offender Supervision: Domestic violence offenders also receive specialized supervision. These officers work closely with other agencies, including victim advocates and victims themselves. Referral is made to batterer intervention programs which conform to state OAR requirements.

Defendant/Offender Management Center (DOMC): Two officers are stationed full-time at the DOMC office. A primary duty is the quick imposition of sanctions on supervised offenders in custody. These officers provide other assistance in determining custody placements, and monitoring offenders in community-based sanctions.

Gang Member/Affiliate Supervision: At least one caseload is devoted to specialized supervision of gang members and affiliates. This involves close coordination with local law enforcement and the juvenile system, as well as specialized knowledge of various gangs and how they function.

Pre-sentence Investigations: Upon the order of the court, preparation of reports containing scope of crime, criminal and social history information, victim(s) statement, medical/psychological information, sentencing guidelines computations, and recommended sentence.

Hearings: Represent Parole Board or Supervisory Authority at contested or uncontested violation hearings to determine an appropriate resolution.

Program Objectives:

To reduce criminal behavior, as measured by the number of new felony convictions after the beginning of probation or post-prison supervision.

To enforce court and Board orders, as evidenced by the percentage of positive case closures for probation and post-prison supervision cases.

To assist offenders to change, as indicated by rates of employment and treatment participation while under supervision.

To use evidence-based offender treatment programs for supervised offenders

To provide reparation to victims, as evidenced by rates of offender restitution payment and community service hours performed.

Method(s) of Evaluation:

Existing reports are available from state DOC databases on all the program objectives specified above.

CPC Review Completed? **X** **No** **Yes; if yes, _____** **Overall Score**

Monthly Average to be served: 3,500

Type of offender served:

Probation Parole / Post-Prison Supervision Local Control

Risk Level

High Medium Low Limited

Gender

Men Women

Crime Category

Felony Misdemeanor

Funding Sources:

<input checked="" type="checkbox"/> State Grant-in-Aid	\$10,023,628
<input checked="" type="checkbox"/> County General Fund	\$ 1,915,516
<input checked="" type="checkbox"/> Other(Client Supervision Fees)	\$ 1,150,000
<input checked="" type="checkbox"/> Other(DOR Probationer Fee)	\$ 200,000
<input type="checkbox"/> Other()	\$

Supervision

Program Name: Offender/Defendant Management – State of Oregon, Lane County Sheriff, Lane County Parole & Probation	
Program Purpose: To reduce criminal behavior and enforce Court, Board of Parole and Post-Prison Supervision, and Local Supervisory Authority orders through assessment, placement and management of defendants and offenders for the protection of the community and the integrity of the criminal justice system by: reducing the risk of community harm and offender recidivism (for both defendants released pretrial and sentenced offenders placed in alternative and community-based programs); more efficiently and effectively utilizing Lane County criminal justice system resources; and, increasing the rate at which defendants and offenders appear for scheduled court proceedings.	
Program Description: This program will provide an evaluation within 24-hours of all defendants brought to the Lane County Adult Corrections facility to assess the defendant's risk of dangerousness, recidivism and potential for failure to appear. Based upon a ranking determined through this assessment, the defendants who qualify for pretrial release will be placed on a release agreement tailored to their individual risk score. In addition, in future, all sentenced offenders will be assessed using a Criminogenic Needs Assessment Tool. This assessment will be used to place offenders in appropriate, available programs that protect the community while meeting the criminogenic needs of the individual offender.	
Program Objectives: Manage decisions about defendants/ offenders using evidence-based tools that gather, preserve and analyze data necessary to make critical decisions about offenders and defendants in the Lane County criminal justice system.	
Method(s) of Evaluation: Evaluation of the program will primarily take place through statistical analysis of data collected by the computerized risk assessment tool, currently in use, as well as data collected by the criminogenic needs assessment tool, which is currently under development.	
CPC Review Completed? <input checked="" type="checkbox"/> No <input type="checkbox"/> Yes; if yes, _____ Overall Score	
Monthly Average to be served:	Type of offender served: <input checked="" type="checkbox"/> Probation <input checked="" type="checkbox"/> Parole / Post-Prison Supervision <input checked="" type="checkbox"/> Local Control Risk Level <input checked="" type="checkbox"/> High <input checked="" type="checkbox"/> Medium <input checked="" type="checkbox"/> Low <input checked="" type="checkbox"/> Limited Gender <input checked="" type="checkbox"/> Men <input checked="" type="checkbox"/> Women Crime Category <input checked="" type="checkbox"/> Felony <input checked="" type="checkbox"/> Misdemeanor
Funding Sources:	
<input checked="" type="checkbox"/> State Grant-in-Aid	\$1,097,690
<input checked="" type="checkbox"/> State Funding	\$1,364,960 (approx)
<input checked="" type="checkbox"/> County General Fund	\$ 655,447
<input checked="" type="checkbox"/> Other (Miscellaneous Revenue)	\$ 681,485 (approx)

Transition Services

Program Name: <i>Transitional Housing – Sponsors, Inc.</i>	
Program Purpose: To reduce criminal behavior, enforce Court, Board of Parole and Post-Prison Supervision, and Local Supervisory Authority Orders and, assist offenders to change by assisting ex-offenders in making a successful transition from Oregon State correctional facilities or Lane County Adult Corrections to the community.	
Program Description: Provide drug and alcohol-free housing for high and medium risk ex-offenders. Assist them in obtaining employment or enrolling in accredited educational programs. Monitor drug and alcohol use through frequent testing. Monitor compliance with supervision requirements and stipulations. Assist participants in achieving economic self-sufficiency by requiring savings for affordable housing. Work with Community Corrections to initiate and maintain offender program activities in Sponsor's facilities.	
Program Objectives: Lower recidivism rate, abstinence from use of alcohol and illegal drugs, to secure full-time employment, full-time student status or a combination of the two, economic self-sufficiency as evidenced by ability to obtain and sustain affordable housing and compliance with all release requirements and stipulations.	
Method(s) of Evaluation: On exit from program, document each client's success in obtaining employment or enrolling in school, abstaining from use of alcohol or illegal drugs, obtaining affordable and sustainable housing and compliance with release requirements and stipulations.	
CPC Review Completed? <input checked="" type="checkbox"/> No <input type="checkbox"/> Yes; if yes, _____ Overall Score	
Monthly Average to be served: 62	Type of offender served: <input checked="" type="checkbox"/> Probation <input checked="" type="checkbox"/> Parole / Post-Prison Supervision <input checked="" type="checkbox"/> Local Control Risk Level <input checked="" type="checkbox"/> High <input checked="" type="checkbox"/> Medium <input type="checkbox"/> Low <input type="checkbox"/> Limited Gender <input checked="" type="checkbox"/> Men <input checked="" type="checkbox"/> Women Crime Category <input checked="" type="checkbox"/> Felony <input type="checkbox"/> Misdemeanor
Funding Sources:	
<input checked="" type="checkbox"/> State Grant-in-Aid	\$1,010,020
<input type="checkbox"/> County General Fund	\$
<input checked="" type="checkbox"/> Other(Client Fees)	\$ 120,000
<input checked="" type="checkbox"/> Other(Food Reimbursements)	\$ 150,000
<input checked="" type="checkbox"/> Other(Donations)	\$ 114,000
<input checked="" type="checkbox"/> Other(FEMA)	\$ 13,000
<input checked="" type="checkbox"/> Other(Human Services Commission)	\$ 23,058
<input checked="" type="checkbox"/> Other(Treatment Transition)	\$ 134,693

Transition Services

Program Name: <i>Crisis Fund and Crisis Fund Administration – Sponsors, Inc.</i>	
Program Purpose: To reduce criminal behavior and assist offenders to change through support of their successful transition into the community by providing assistance in transportation (bus passes), obtaining ID cards, medications, work clothing & supplies and a myriad of other needed items. A portion of the fund is used to cover the administration cost of maintaining an accounting system.	
Program Description: Expenditures from the crisis fund are approved by either Parole or Probation or Community Corrections Center staff, based on their perception of offender needs. Most transaction in the crisis account is for \$50 or less. A portion of the fund is used to pay for staff to log fund expenditures approvals, write check for offenders, bill the County to replenish the fund and reconcile the bank statements. The Crisis Fund receives \$12,000 each year of the biennium for a total of \$24,000. Sponsor's received \$9,006 to administer the fund.	
Program Objectives: To provide offenders with picture ID cards and transportation in order to obtain employment. To provide, when appropriate, emergency medications, work clothing, tools and supplies for employment in order for the offender to be a successful employee.	
Method(s) of Evaluation: Not applicable.	
CPC Review Completed? <input checked="" type="checkbox"/> No <input type="checkbox"/> Yes; if yes, _____ Overall Score	
Monthly Average to be served: 30-50	Type of offender served: <input checked="" type="checkbox"/> Probation <input checked="" type="checkbox"/> Parole / Post-Prison Supervision <input checked="" type="checkbox"/> Local Control Risk Level <input checked="" type="checkbox"/> High <input checked="" type="checkbox"/> Medium <input checked="" type="checkbox"/> Low <input type="checkbox"/> Limited Gender <input checked="" type="checkbox"/> Men <input checked="" type="checkbox"/> Women Crime Category <input checked="" type="checkbox"/> Felony <input type="checkbox"/> Misdemeanor
Funding Sources:	
<input checked="" type="checkbox"/> State Grant-in-Aid	\$ 33,006
<input type="checkbox"/> County General Fund	\$
<input type="checkbox"/> Other(_____)	\$

Release Subsidy

Program Name: <i>Release Subsidy Fund – Sponsors, Inc.</i>	
Program Purpose: To reduce criminal behavior and enforce Court, Board of Parole and Post-Prison Supervision, and Local Supervisory Authority Orders through assistance to stabilize offenders returning to the community from prison.	
Program Description: Funding for this program is passed through the inmate welfare fund and is designated for housing for those on parole or post-prison supervision. The fund contributes towards the cost of housing at a rate of \$10.00 per day, not to exceed 30 days for each specified offender.	
Program Objectives: To provide offenders with safe, structured drug & alcohol-free housing.	
Method(s) of Evaluation: Not applicable.	
CPC Review Completed? <input checked="" type="checkbox"/> No <input type="checkbox"/> Yes; if yes, _____ Overall Score	
Monthly Average to be served:	Type of offender served: <input checked="" type="checkbox"/> Probation <input checked="" type="checkbox"/> Parole / Post-Prison Supervision <input checked="" type="checkbox"/> Local Control Risk Level <input checked="" type="checkbox"/> High <input checked="" type="checkbox"/> Medium <input type="checkbox"/> Low <input type="checkbox"/> Limited Gender <input checked="" type="checkbox"/> Men <input checked="" type="checkbox"/> Women Crime Category <input checked="" type="checkbox"/> Felony <input type="checkbox"/> Misdemeanor
Funding Sources:	
<input type="checkbox"/> State Grant-in-Aid	\$
<input type="checkbox"/> County General Fund	\$
<input checked="" type="checkbox"/> Other(<u> Inmate Welfare Fund </u>)	\$ 55,374
<input type="checkbox"/> Other(_____)	\$

Other Services

Program Name: <i>Alcohol / Drug Detoxification – Willamette Families Treatment Services</i>	
Program Purpose: To reduce criminal behavior and enforce Court, Board of Parole and Post-Prison Supervision, and Local Supervisory Authority Orders by providing twenty-four hour observation, monitoring and treatment for offenders who are suffering from alcohol and/or other drug intoxication or withdrawal.	
Program Description: Detoxification services include: one nurse and one medical practitioner visit per bed day per offender; medications as prescribed; one bed day of housing and three meals per bed day per offender; laundry and other domestic services as needed; and, referrals to a qualified addiction treatment service provider as needed.	
Program Objectives: Provide a safe environment, medical supervision, medicine - as needed, and support services to enable the chemically impaired offender to detoxify, stabilize and engage in addiction treatment and recovery; and, to increase the rate of participation in treatment programs for offenders on supervision.	
Method(s) of Evaluation: Some or all of the following: client re-arrest records; slot utilization measurements and reporting; detox retention and completion rates; and, referral agency feedback (for supervised offenders).	
CPC Review Completed? <input checked="" type="checkbox"/> No <input type="checkbox"/> Yes; if yes, _____ Overall Score	
Monthly Average to be served: 61 bed days per month	Type of offender served: <input checked="" type="checkbox"/> Probation <input checked="" type="checkbox"/> Parole / Post-Prison Supervision <input checked="" type="checkbox"/> Local Control Risk Level <input checked="" type="checkbox"/> High <input checked="" type="checkbox"/> Medium <input checked="" type="checkbox"/> Low <input checked="" type="checkbox"/> Limited Gender <input checked="" type="checkbox"/> Men <input checked="" type="checkbox"/> Women Crime Category <input checked="" type="checkbox"/> Felony <input checked="" type="checkbox"/> Misdemeanor
Funding Sources:	
<input checked="" type="checkbox"/> State Grant-in-Aid	\$ 146,000
<input checked="" type="checkbox"/> County General Fund	\$ 218,962
<input checked="" type="checkbox"/> Other(OR DHS AMHD _____)	\$ 487,620
<input checked="" type="checkbox"/> Other(Lane Co Human Svcs Commission _____)	\$ 106,244
<input checked="" type="checkbox"/> Other(2145 Beer & Wine Tax _____)	\$ 61,220